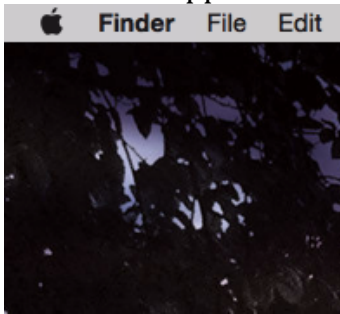
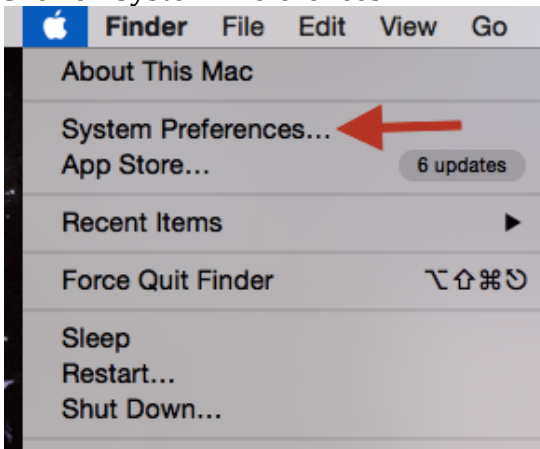


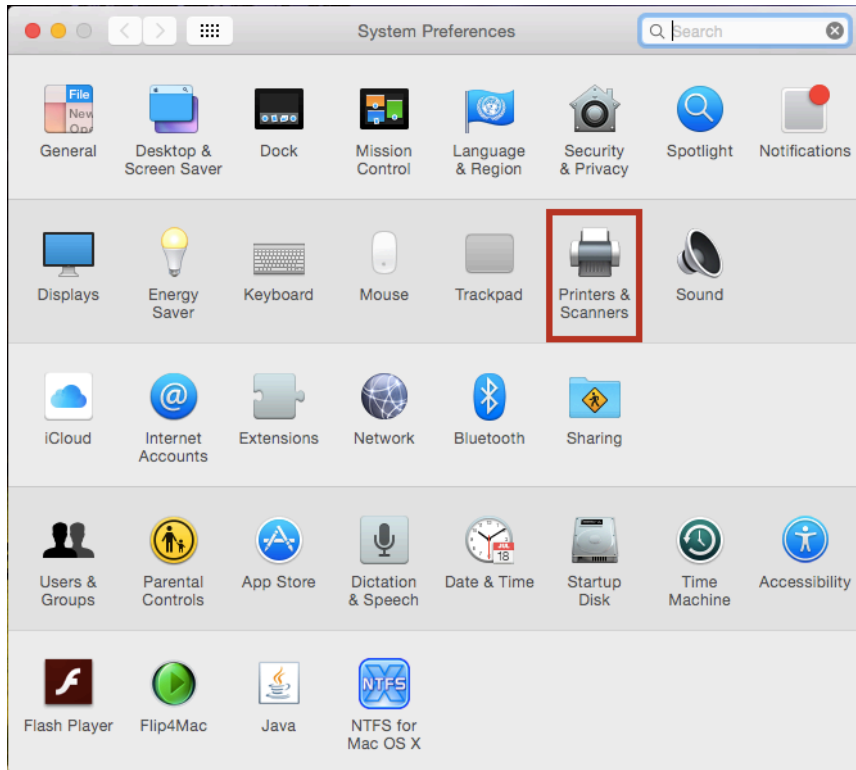
To Add A Printer By IP Address
Click on the Apple on the top left corner



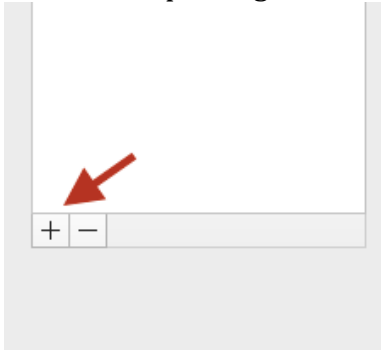
Click on System Preferences



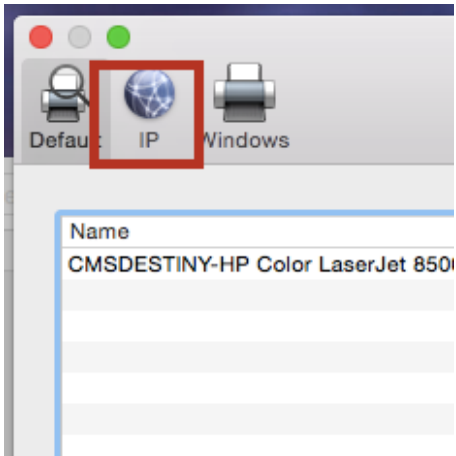
Click on Printers&Scanners



Click on the plus sign



Click on the IP tab



Enter the 10.x.3.x number (it may be written on the printer)

A screenshot of a printer configuration dialog box. It contains several input fields: 'Address:' with a text box and a small instruction 'Enter host name or IP address.' below it; 'Protocol:' with a dropdown menu showing 'Line Printer Daemon - LPD'; 'Queue:' with a text box and a small instruction 'Leave blank for default queue.' below it; 'Name:', 'Location:', and 'Use:' each with their respective input fields. An 'Add' button is located at the bottom right of the dialog.

Click add

